

# NATIVE PLANTS FOR THE SHADE

Paul Thompson  
Clemson Extension Service

1



Trout Lily  
*Erythronium spp.*

2



3



4



Green and Gold  
*Chrysogonum virginianum*

5



6



7



8



9



10



11



12



Smooth Solomon's Seal  
*Polygonatum biflorum*

13



Golden Ragwort  
*Packera aurea*

14



15



16





17



18



19



20



21



22



23



24



25



26



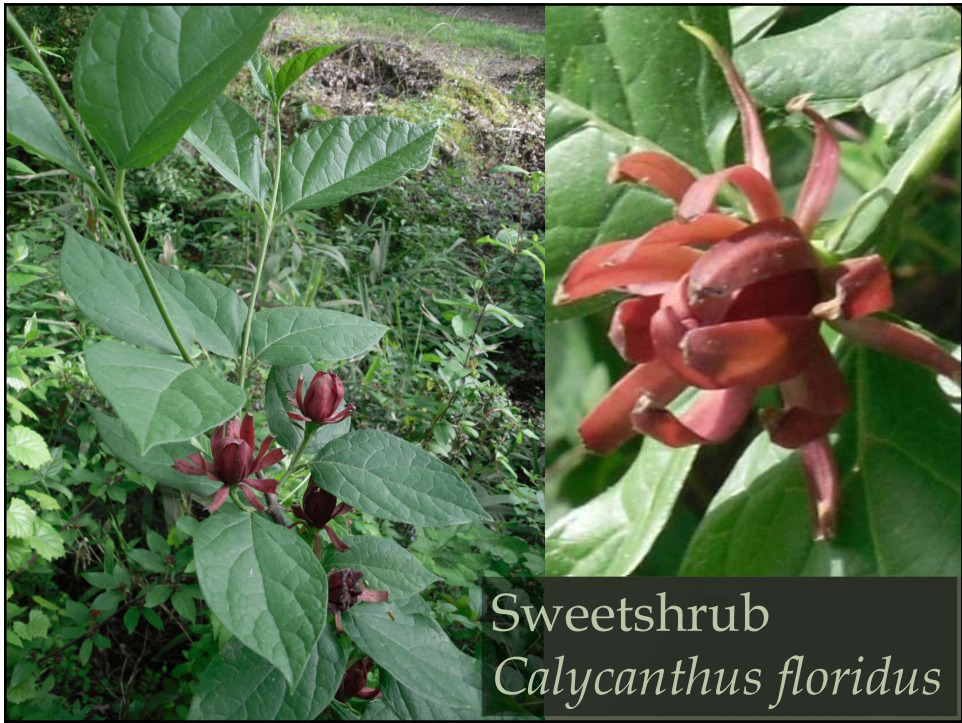
27



28



29



30



31



32





33



Spicebush  
*Lindera benzoin*

34



Needle Palm  
*Rhapidophyllum hystrix*

35



American Beautyberry  
*Callicarpa americana*

36



Painted Buckeye  
*Aesculus sylvatica*

37



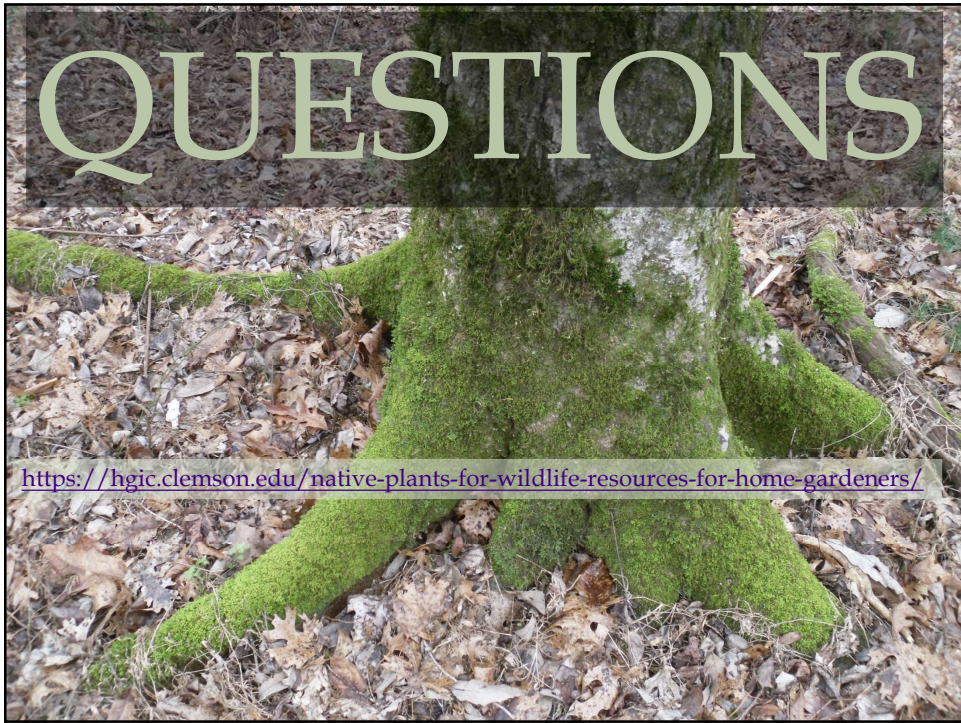
Bottlebrush Buckeye  
*Aesculus parviflora*

38



Red Buckeye  
*Aesculus pavia*

39



40

## NATIVE PLANT NURSERIES

Carolina Wild - Anderson, SC

Naturescapes - Beaufort, SC

Woodlanders - Aiken, SC

Nurseries Caroliniana - North Augusta, SC

Carolina Native Nursery - Burnsville, NC

Roots and Shoots - Charleston, SC

Carolina Heritage Nursery - Waxhaw, NC

Elk Mountain Nursery - Alexander, NC

Local SCPS chapter plant sales